

Journey to Belonging: Choice and Inclusion

MCCSS Updates

June 24, 2025

Evolution of DS Services and Supports

Institutional Care 1876 – 2009

People with developmental disabilities were served in institutions, which isolated them from their families and communities

Services and Supports to Promote the Social Inclusion of Persons with Developmental Disabilities Act, 2008

New legislation and provincially consistent processes established to promote community inclusion and fairness

Community Living Movement begins 1970s and on...

Agencies began forming to provide services and supports in communities through group homes and sheltered workshops

Journey to Belonging: Choice and Inclusion 2021

Sets out a new vision for more individualized services and supports to support community belonging

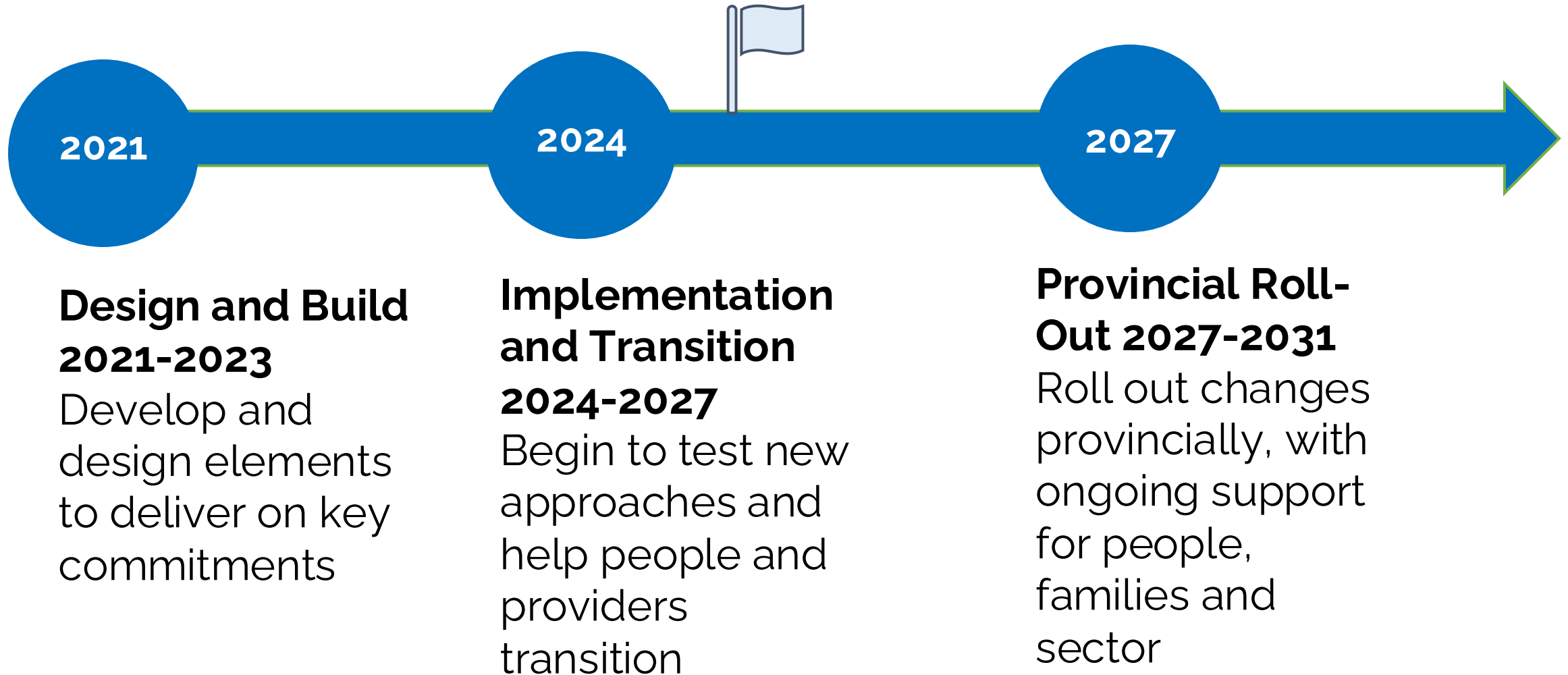


Vision

- People with developmental disabilities are supported by their communities, support networks and government to belong and live inclusive lives.
- People are empowered to make choices and live as independently as possible through supports that are person-directed, equitable and sustainable.



Path Forward



Highlights from 2024

**Putting
People
First**



- ✓ Launched the **Technical Table** and receiving advice on service categories and levels of needs to inform a funding approach that we call Individualized Budgets.



- ✓ Launched a pilot for families to learn how to set up and run their **Microboard**, using their natural relationships to provide ongoing, personalized support for their family members.



- ✓ Expanded the **Clinical Justice Program** to help people with developmental disabilities involved in the criminal justice system have easier access to information and supports.

Highlights from 2024

Improving Service Experience



- ✓ Implemented the new [online planning tool](#) for Passport recipients who self-administer their funding to help plan for and utilize their Passport funding.



- ✓ Expanded Mental Health Micro-credentials

Highlights from 2024

Improving Quality and Accountability



- ✓ Developed Recruitment and Retention Toolkit for employers
- ✓ Supported trainings for Operational and Emerging leaders and Core Competency Cafes to enhance workforce skills



- ✓ Collected workforce data to inform planning
- ✓ Collaborated with other ministries to address challenges of workforce pool.

Person-centred Funding

Key Public Commitment

Journey to Belonging commits to the development of a new funding model where funding is **directly linked to people's needs** and people have options for **greater choice and flexibility**.

Key Components of A Person-Centred Funding Approach

A new person-centred funding approach requires work in three key areas:



Individualized Budgets

Developing a way to calculate how much funding a person gets



Policy and Process

Developing the rules and processes for how people receive and spend budgets to access services



Timing and Transition

Planning how and when changes will be made in a gradual basis with support for people and service providers

Where are we now?

We are researching and consulting stakeholders about the design of individualized budgets.

We are looking at an approach that creates levels of assessed need and funding and aligns individuals with the appropriate level.



Learning from
research and
other
jurisdictions



Technical Table
on Design of
Individualized
Budgets



Talking to
organizations in
Ontario

Resources



[The REAL Xchange](#)

This is an online hub for resources, knowledge exchange, collaboration and learning in the DS Sector.



[DS Workforce Initiative](#)

This site will inform you on the core competencies developed for Ontario's Developmental Service, a self-assessment, coaching and information on conducting behaviour-based interviews.



[Partners for Planning \(planningnetwork.ca\)](http://planningnetwork.ca)

Partners for Planning offers people who have a disability and their families/caregivers a variety of free and fee-based resources. In addition, MCCSS offers many free webinars through P4P.